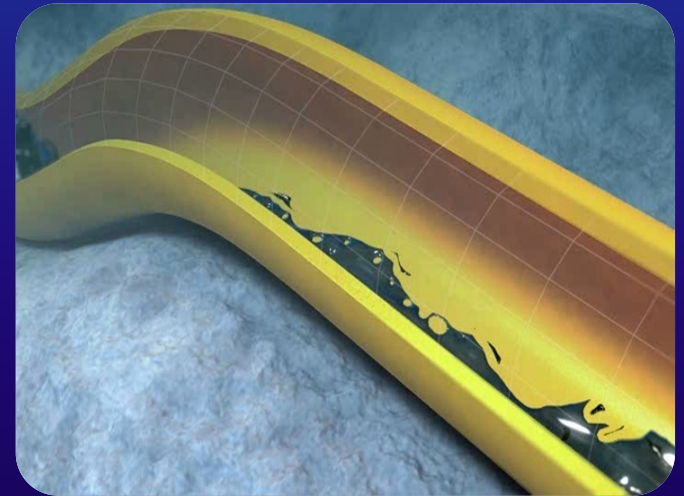


Project Management in Schlumberger Information Solutions

John K. Arthur

Project Manager, Asset Optimization



Schlumberger

Topics

- Introduction
- Challenges to Project Execution
- Integrated Project Execution Framework
- What Works Well
- What Works Not So Well
- Conclusions



Schlumberger At A Glance

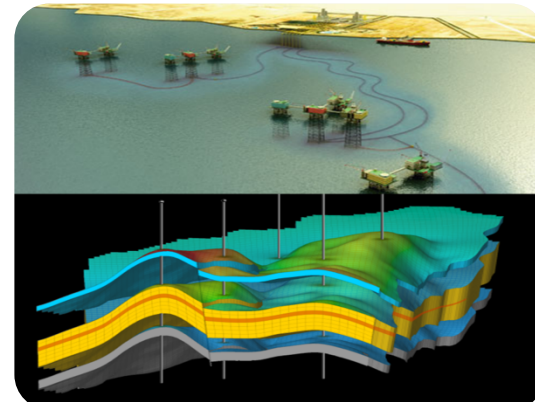
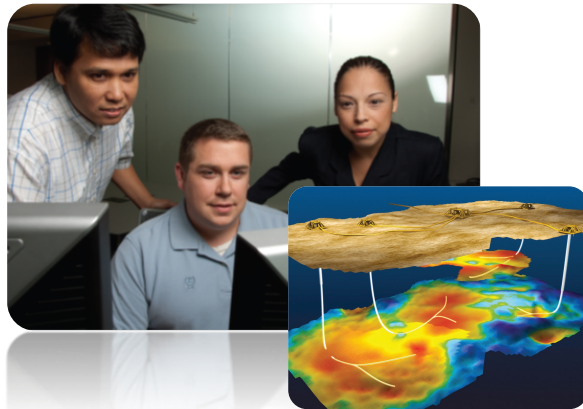
- World's Largest Oil Field Services Provider
- 45 billion USD in turnover
- 123 000 Employees
- 140 Nationalities
- Operating in 45 Countries
- *Schlumberger Information Solutions* one of 22 segments.
- CEO is Paal Kibsgaard



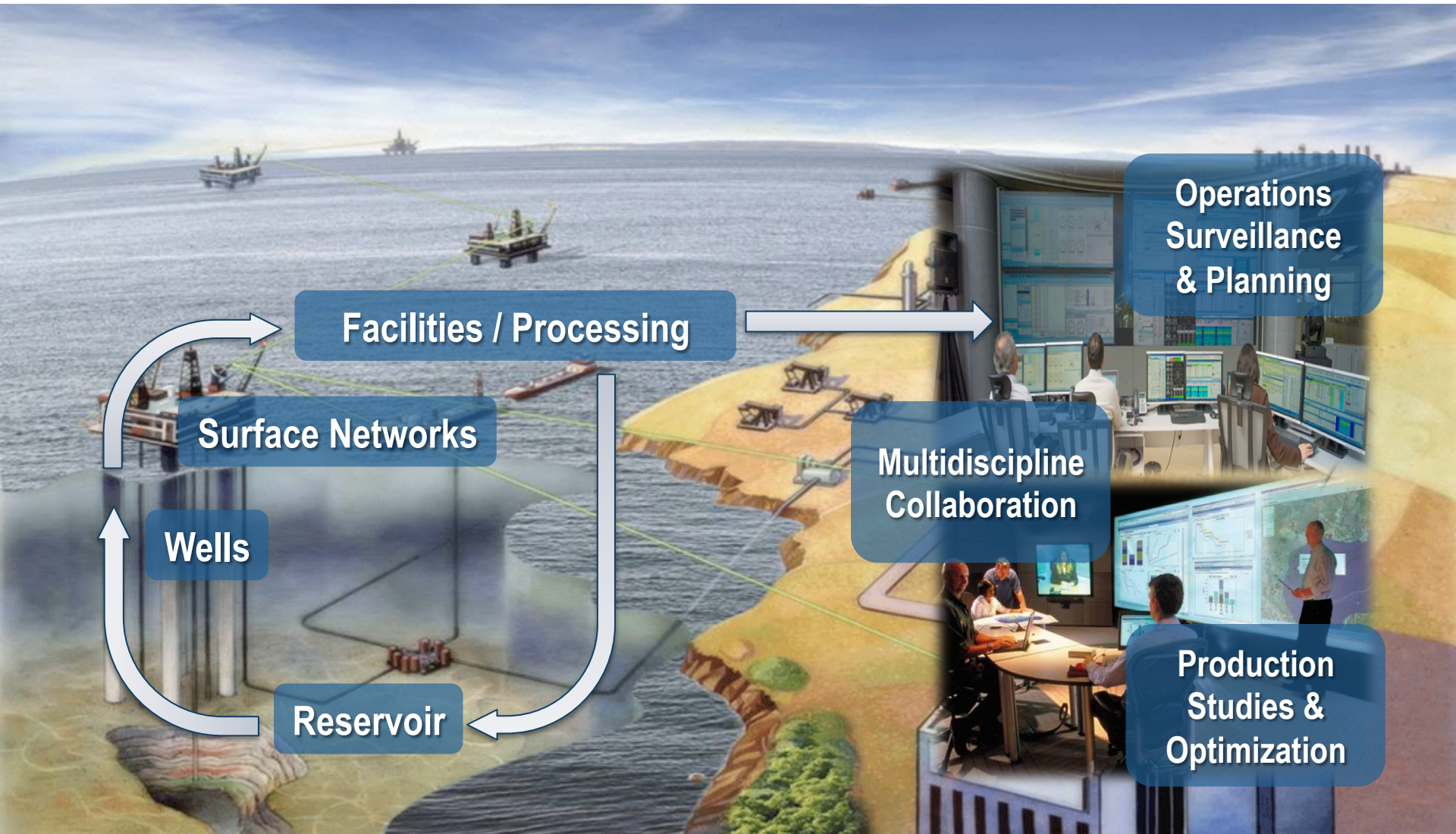
Asset Optimization

The Definition

- Asset Optimization (AO) is the practice of integrating people, technology, information and processes.



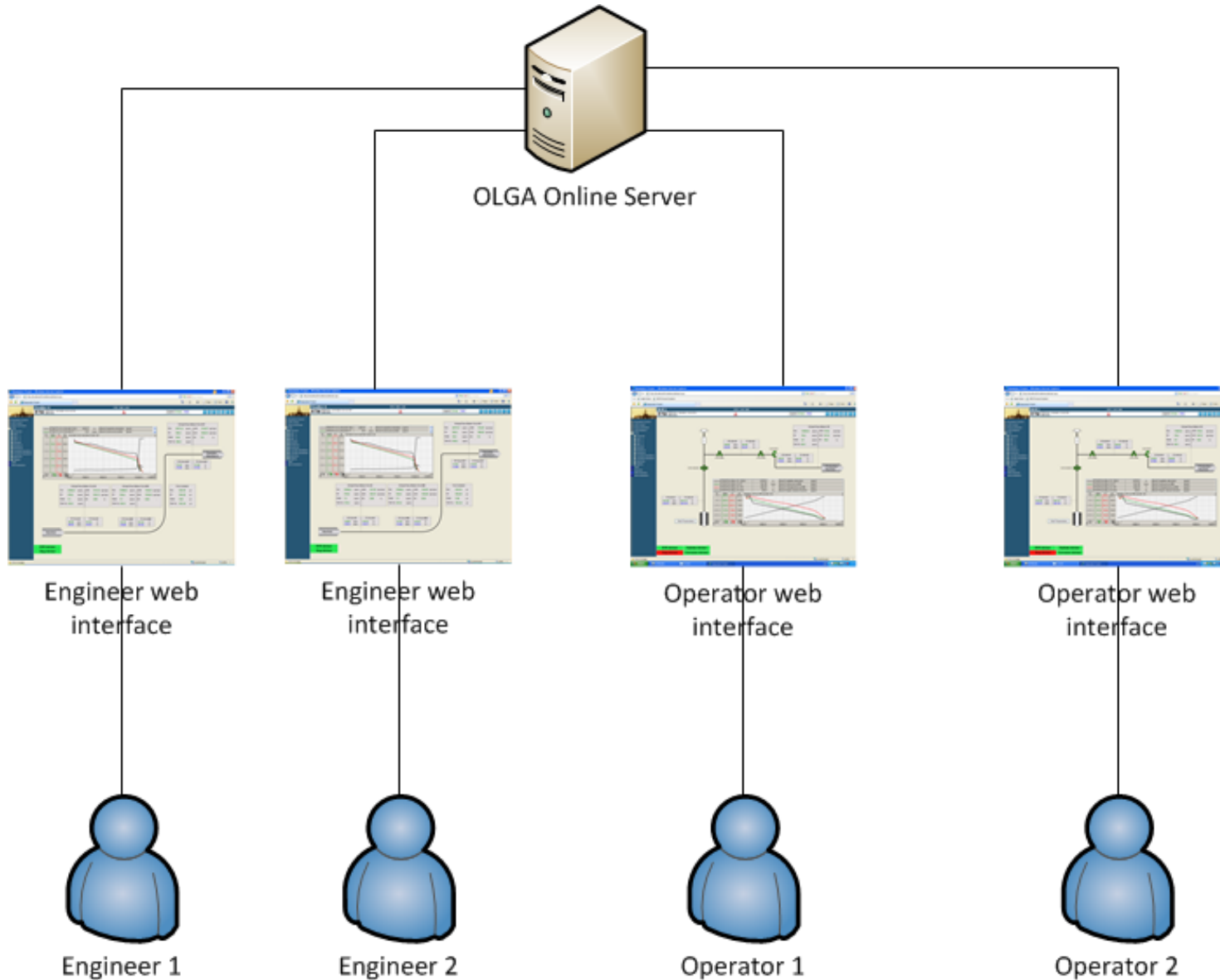
Operational Decision Support System - Asset Optimization



Bridging: People—Processes—Technology

Schlumberger

OLGA Online – Web Based User Interface



Online Asset Optimization in a Control Room Setting



Delivering Projects Worldwide from 3 Execution Hubs



Typical Project Profile

Customers:

- Engineering Contractors and Oil Majors

Customer/Field Locations:

- Middle East, Australia, Malaysia, Brazil

Budget:

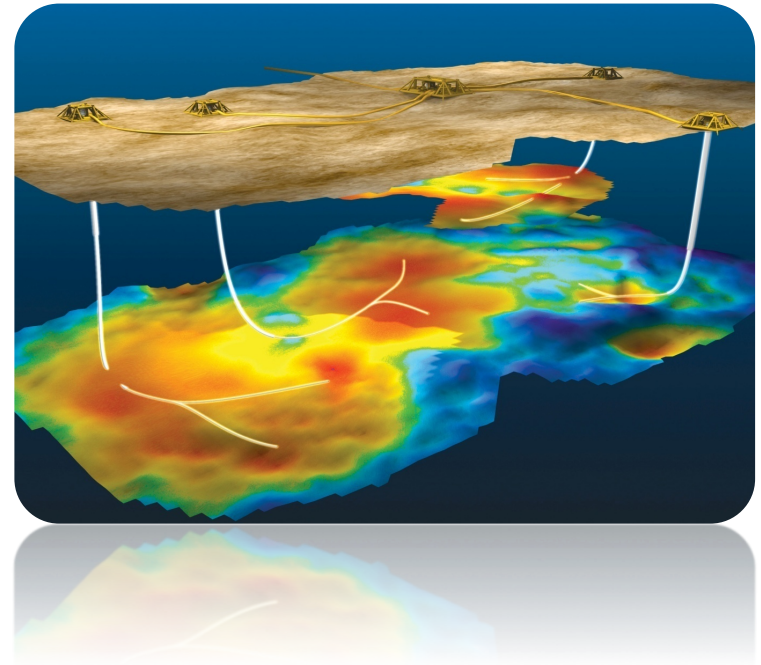
- 1-3 million USD (fixed price)

Resource Requirements:

- 4-8 full time employees

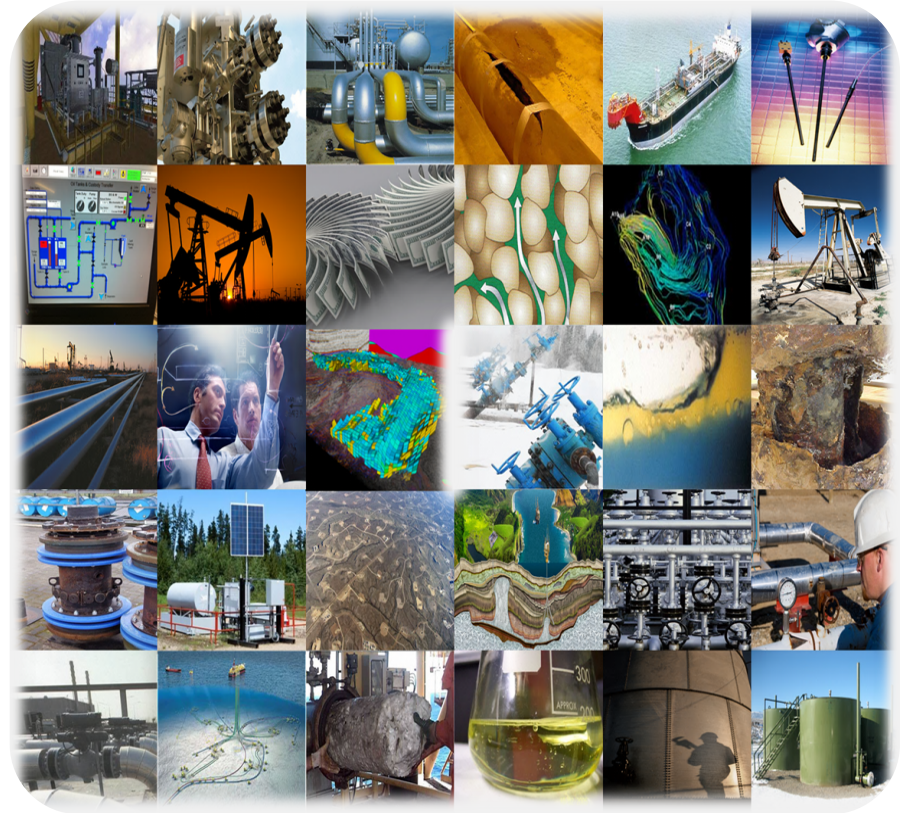
Deliverables:

- System Hardware (16 CPUs, 64 GB RAM, 2x500GB RAID, Windows Server 2008)
- Simulation Models (5-6 models)
- OPC Kernel (20 -30 000 tags)
- Web-based user interface (15-30 pages)



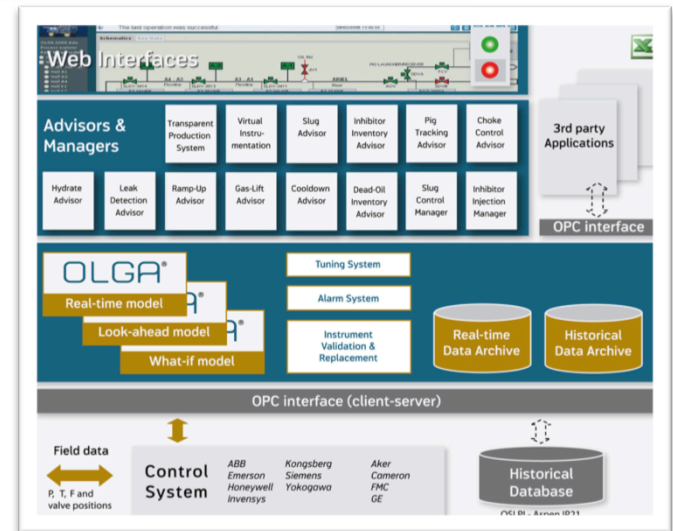
Challenges to Project Execution 1

- Global spread of project members (Oslo, Houston, Perth)
- Cultural differences with customers
- All projects are unique
- Dependency on place in value chain
 - The lower we are the harder project execution is.
- Data gathering

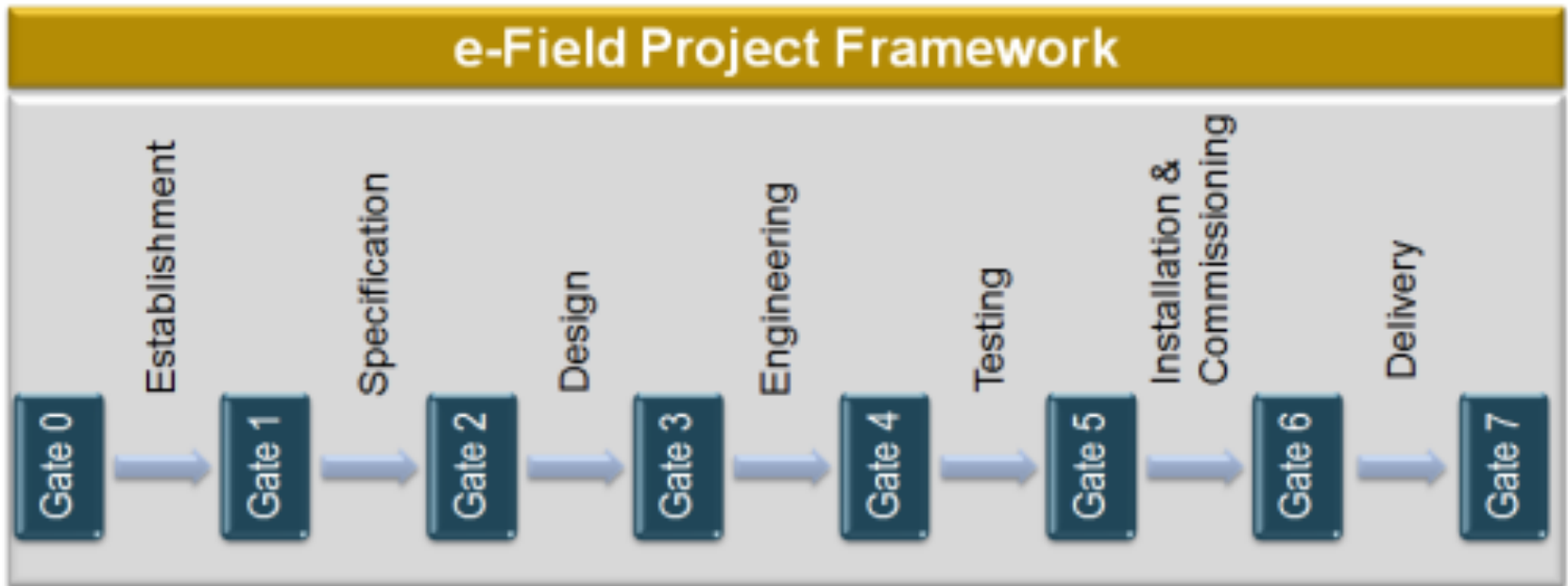


Challenges to Project Execution 2

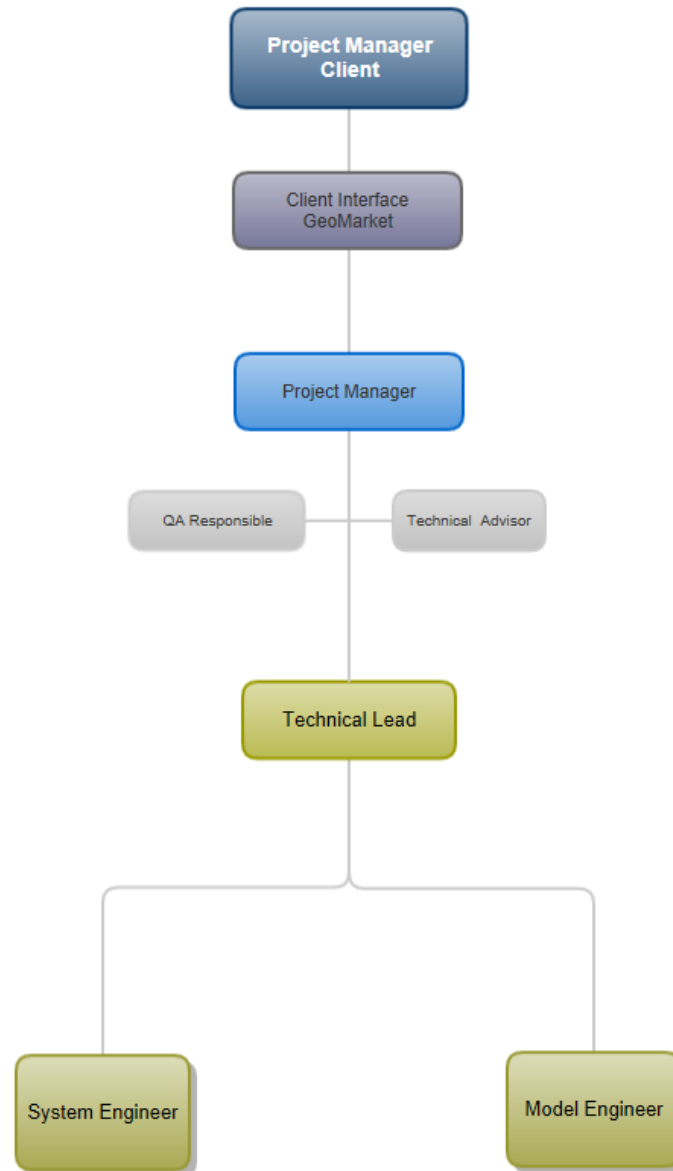
- Project Complexity:
 - Engineering data
 - IT Systems
 - Simulation Models
 - OPC Kernel
 - Web systems
- Fixed price means tight project execution is essential.



Project Methodology

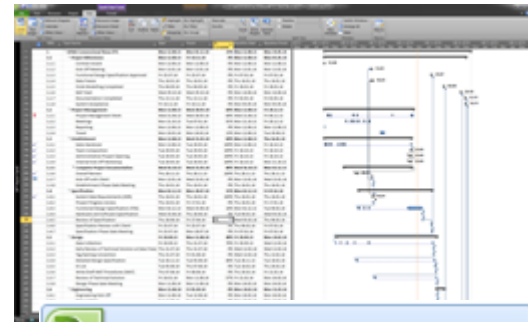



Typical Project Organization

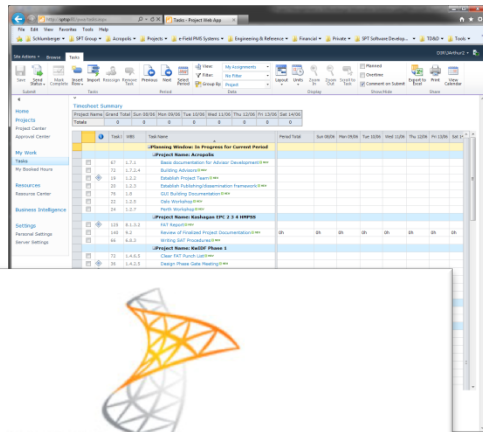



Integrated Project Execution Framework: Main Toolset

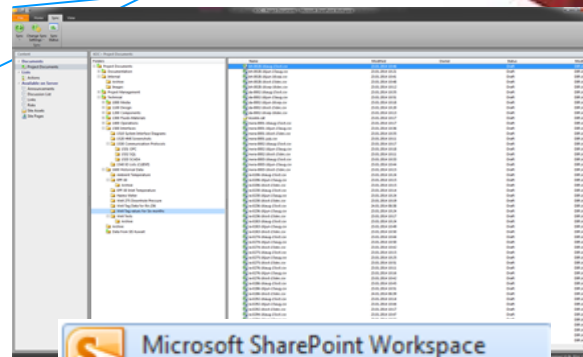
- MS Project 2010.
- MS Project Server 2010.
- MS Sharepoint Server and Workspace 2010




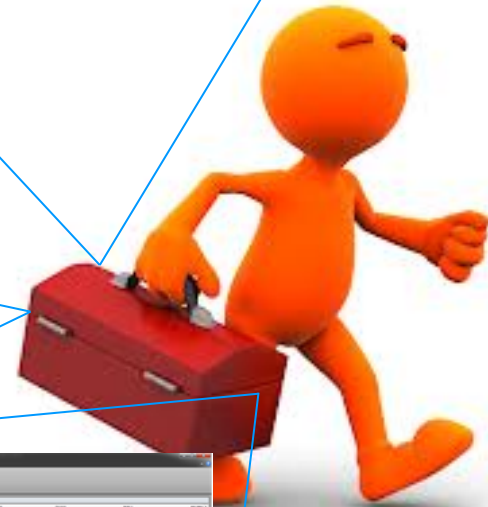
 Microsoft Project 2010



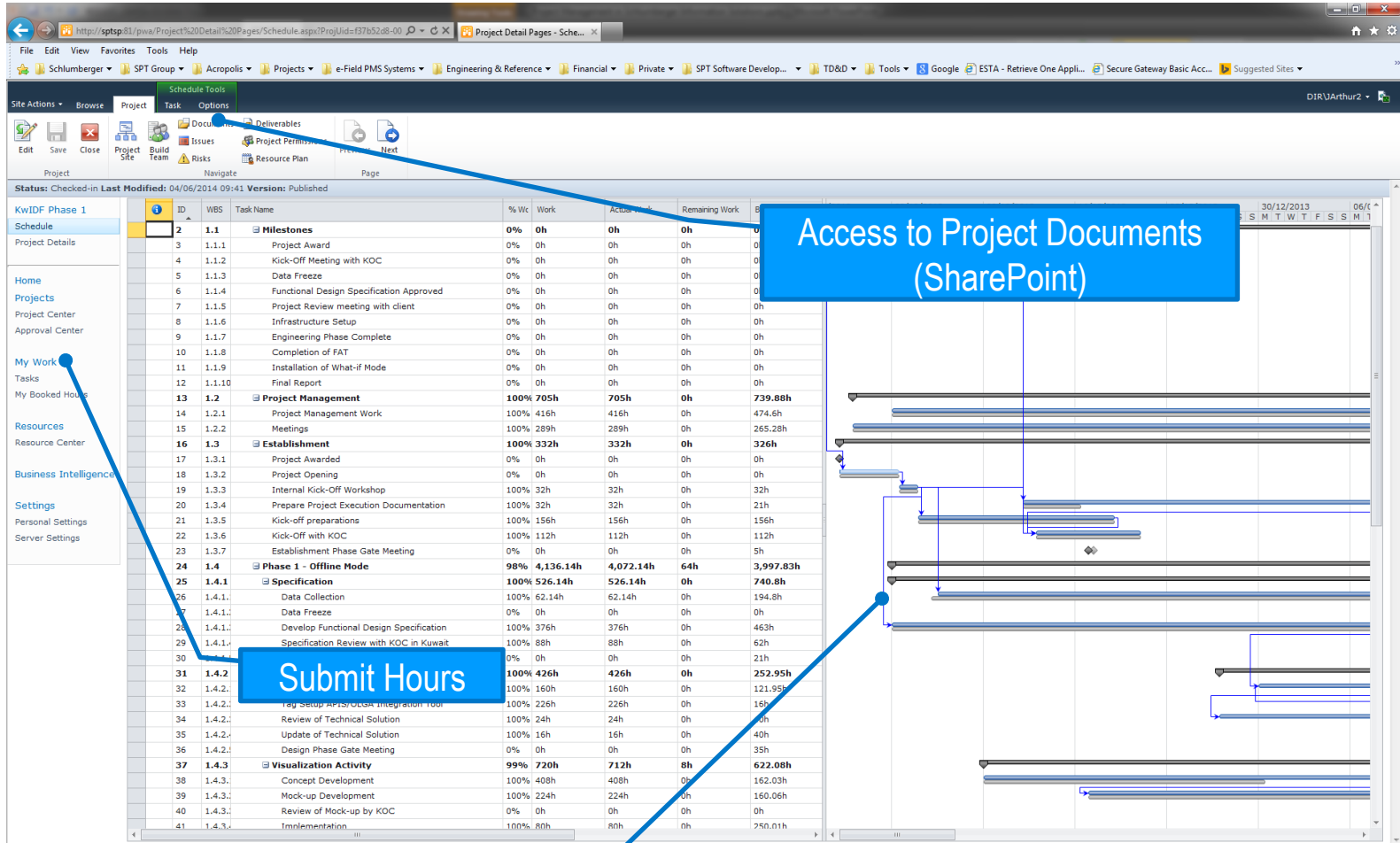

Microsoft
Project Server 2010



 Microsoft SharePoint Workspace 2010



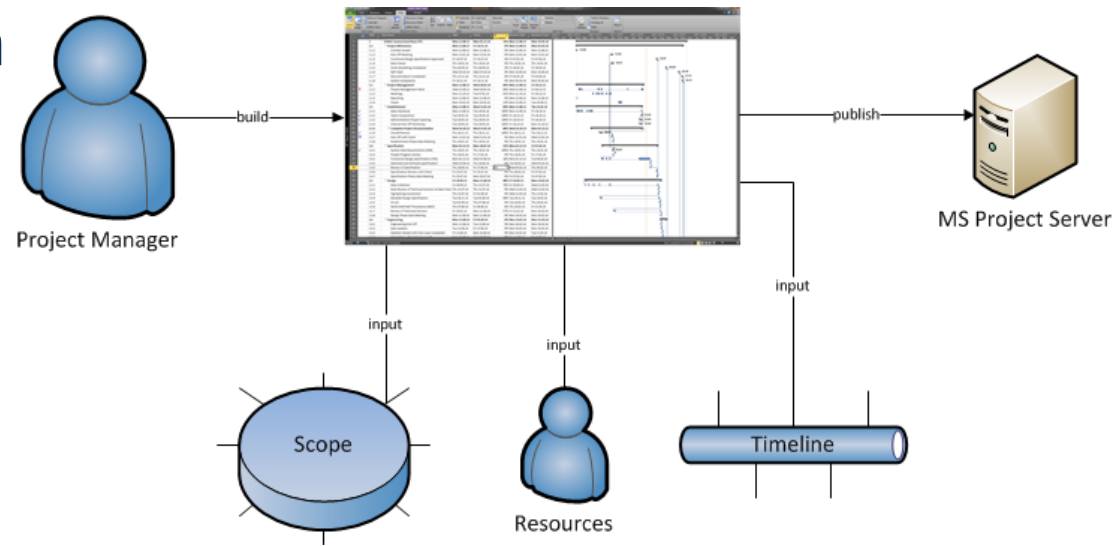
Integrated Project Execution Framework: Project Web Portal



Project Gantt Chart

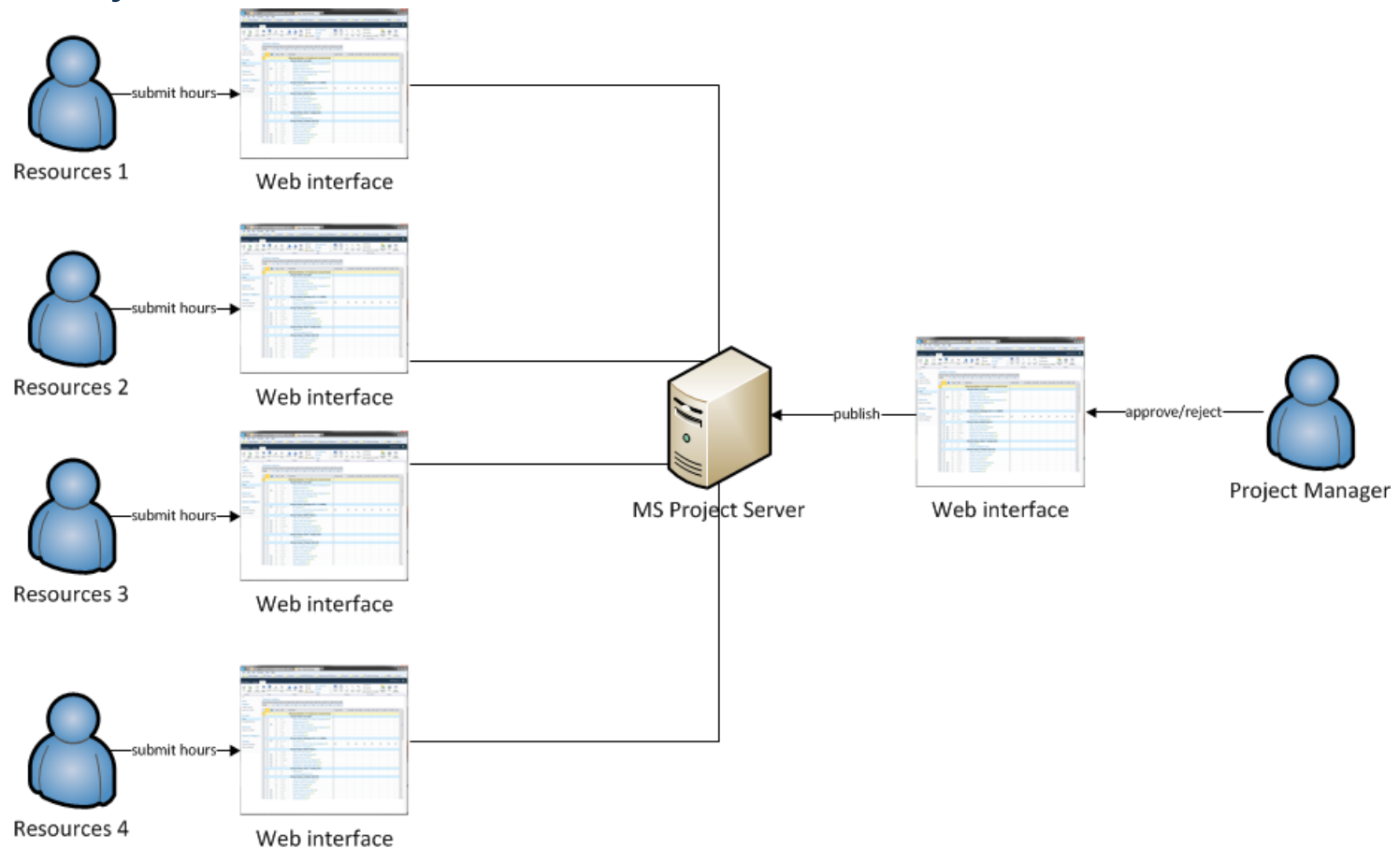
Integrated Project Execution Framework: Setup

- Project Manager creates an initial project plan based on pre-defined template on Project Server
- Update project with, scope, resources, timeline etc.
- Project is published and available on project server.



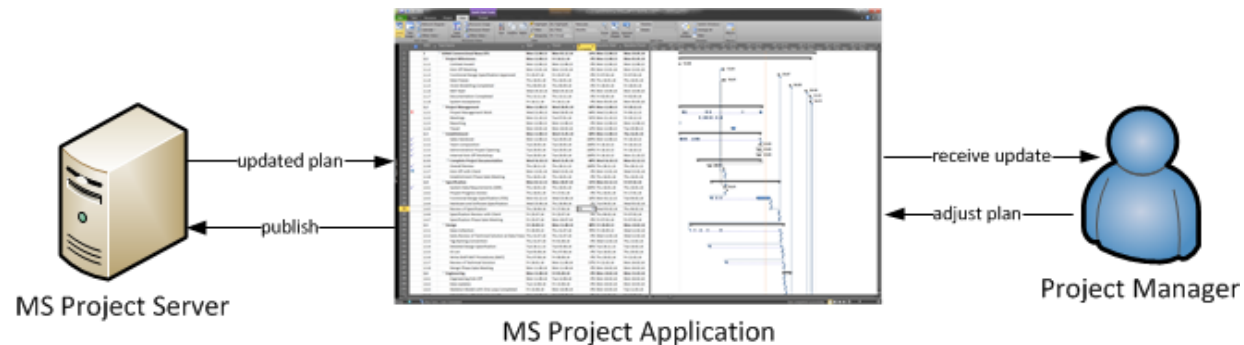
Integrated Project Execution Framework: Execution

- Project Members submit hours weekly/daily.
- Project Manager approves or rejects hours.



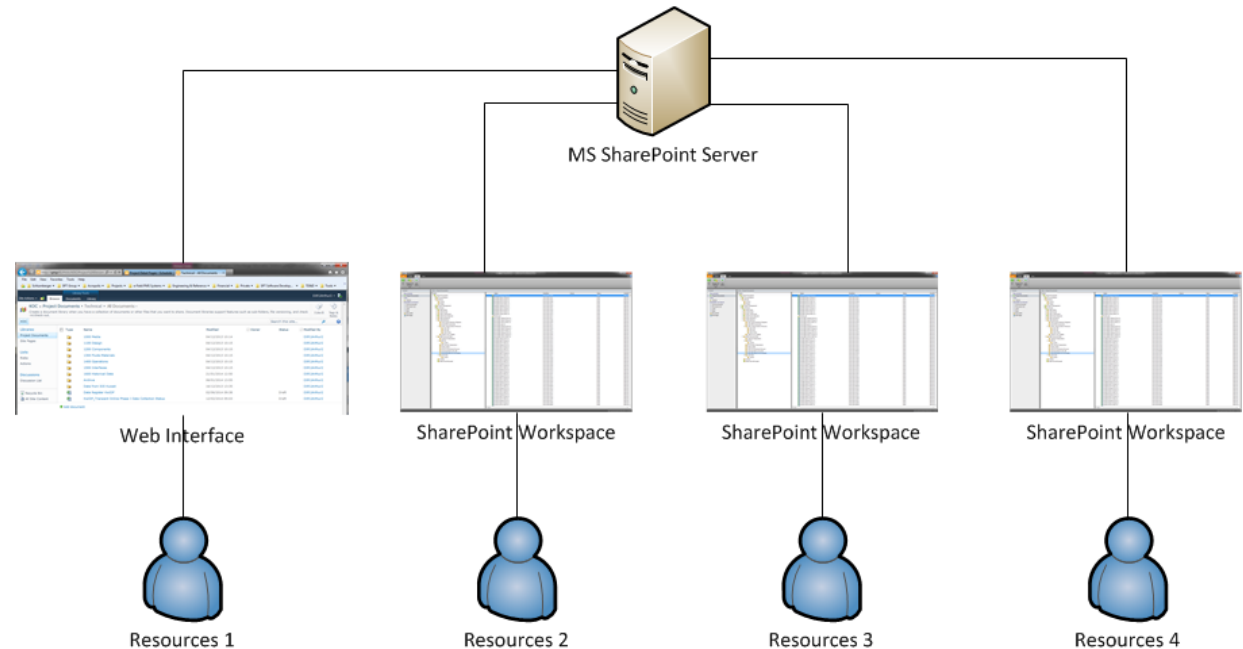
Integrated Project Execution Framework: Project Plan Update

- Project Plan is Automatically updated with approved project resources' hours.
- Project Manager can adjust plan based on weekly updates.
- Updated plan is available for project members when published.



Integrated Project Execution Framework: Project Documentation

- MS SharePoint is also accessible from web and Sharepoint Workspace.
- Secure access granted to all project members.
- Provides Project Document and Data Storage



What Works Well

- Integrated Environment for Project Setup and Execution.
- Project Team can submit hours based on approved project plan.
- Project Manager approves/rejects hours.
- Project Plan is updated based on approved hours.
- Project Manager gets weekly feedback on current status of project.
- Possible to keep a good overview of whether project is on track.



What Works Not So Well

- Web interface for submitting ours could be streamlined.
 - Its easy to submit hours on the wrong project.
 - With many projects its easy to lose an overview of hours.
- «Grabbing tasks» that project members have not been assigned can unexpectedly add many hours to the project.
- Projects can get «stuck» in limbo between MS Project and Project Server.
- SharePoint Workspace interface can be unintuitive.



Conclusions

- MS Project Server, SharePoint and MS Project provide a solid Integrated Project Execution Environment.
- Has become an essential tool for successful project execution.
- Keeps projects (more or less) on time and on budget.
- Integrated project hour registration and plan update key feature.



MS Project Server Wish List

- Better web GUI for hours.
- Better publishing of projects.
- SmartPhone or Tablet App for clocking hours.
- SmartPhone App for Project Managers to keep track!





Thank You!