



The Maritime Communications Experts™

SINCE  
1994

# Unlock the Potential of **Internet On Board**

ONBOARD IP TRAFFIC CONTROL  
POWERFUL WEB OPTIMISATION  
FULLY AUTOMATED ANTI-VIRUS  
SEAMLESS BUSINESS E-MAIL  
ZERO ADMIN CREW E-MAIL  
CENTRALISED CREW INTERNET QUOTA

**Dualog Hybrid Cloud**

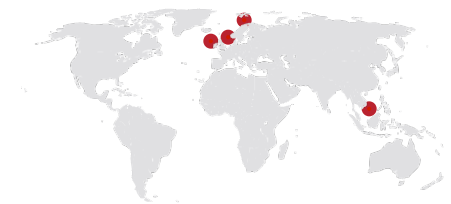
Rasmus Lauridsen

# Agenda

- **Dualog**
  - Introduction to Dualog
  - IT service challenges
- **Hybrid Cloud**
  - Definition and what it really is?
- **Dualog network topology**
- **Requirements**
  - Not all data centres are created equal
- **Implementation**
- **Experience**
- **Questions**

# Dualog: a complete ship- shore data communications solution

- **Founded in Tromsø, Norway 1994**
- **40+ employees**
- **Headquarter in Tromsø**
  - Offices in Oslo, Liverpool and Singapore



## OUR OFFERINGS

### Ship-Shore IT Services

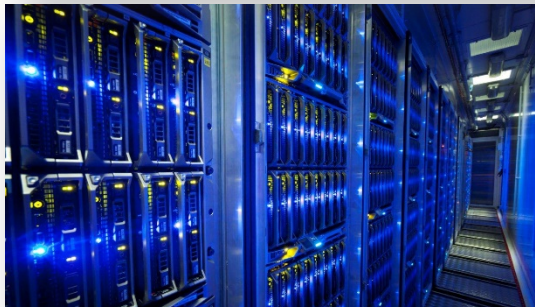
- Crew Services
- Business Services
- Security & Control Services

### Deployment Services

- Installation Services
- Connection Suite Pre-Installed
- Connection Suite Disaster Recovery

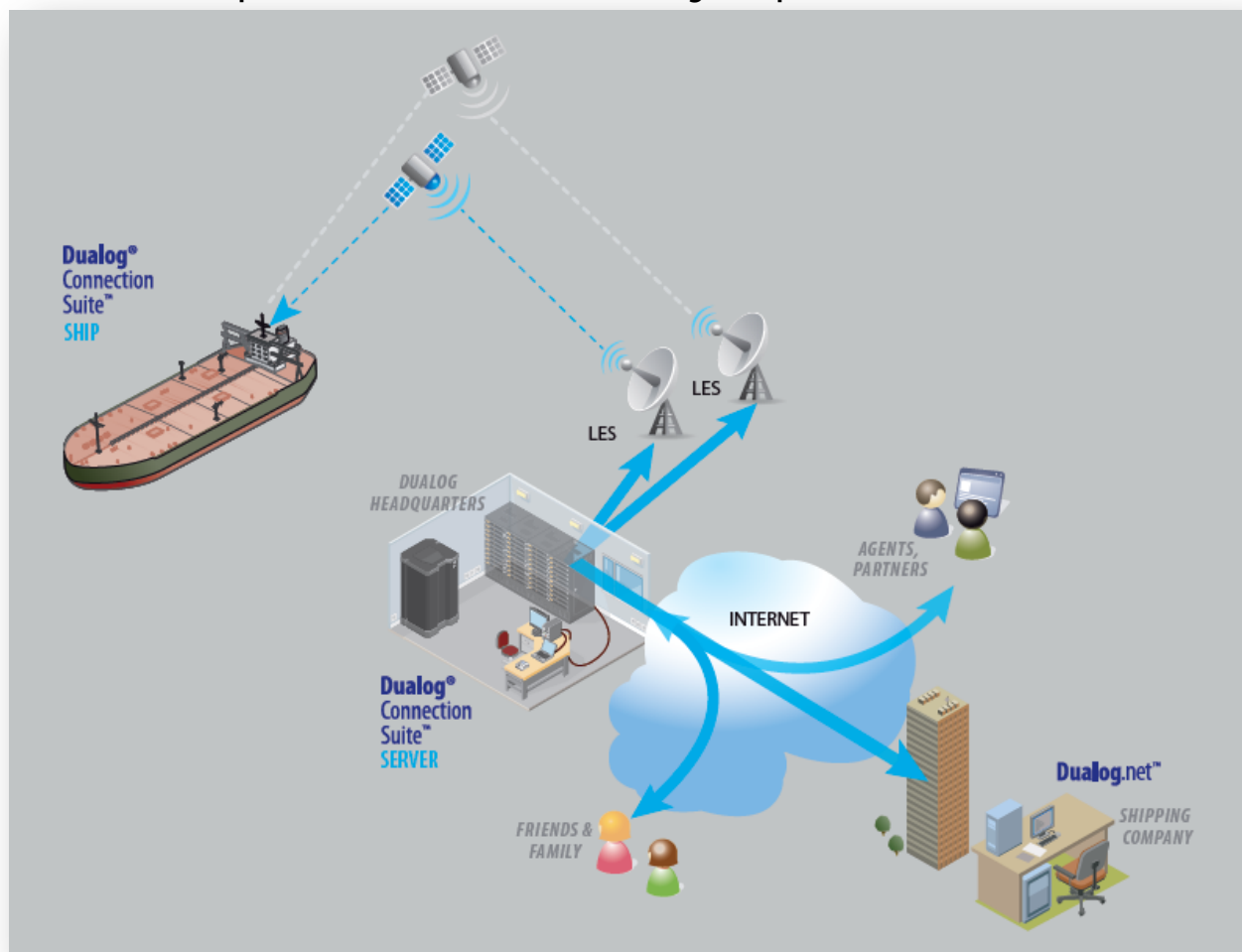
### Support & Consultancy Services

- Customer training
- Customer specific reports
- General Communications Consultancy



# Dualog – technical overview

- The technical concept consists of three main Dualog components



# Challenges

Main office in Tromsø, several branch offices and mobile users

- **Several server sites**
  - Tromsø
  - Oslo
  - Singapore
- **High latency**
  - TOS – SG 4-500 ms
- **Maintenance**
- **Mobile users**

## Hybrid Cloud Definition

*“Cloud computing environment which uses a mix of on-premises, private cloud and public cloud services with orchestration between the two platforms.”*

- Google

*“Policy-based and coordinated service provisioning, use and management across a mixture of internal and external cloud services.”*

- Gartner®

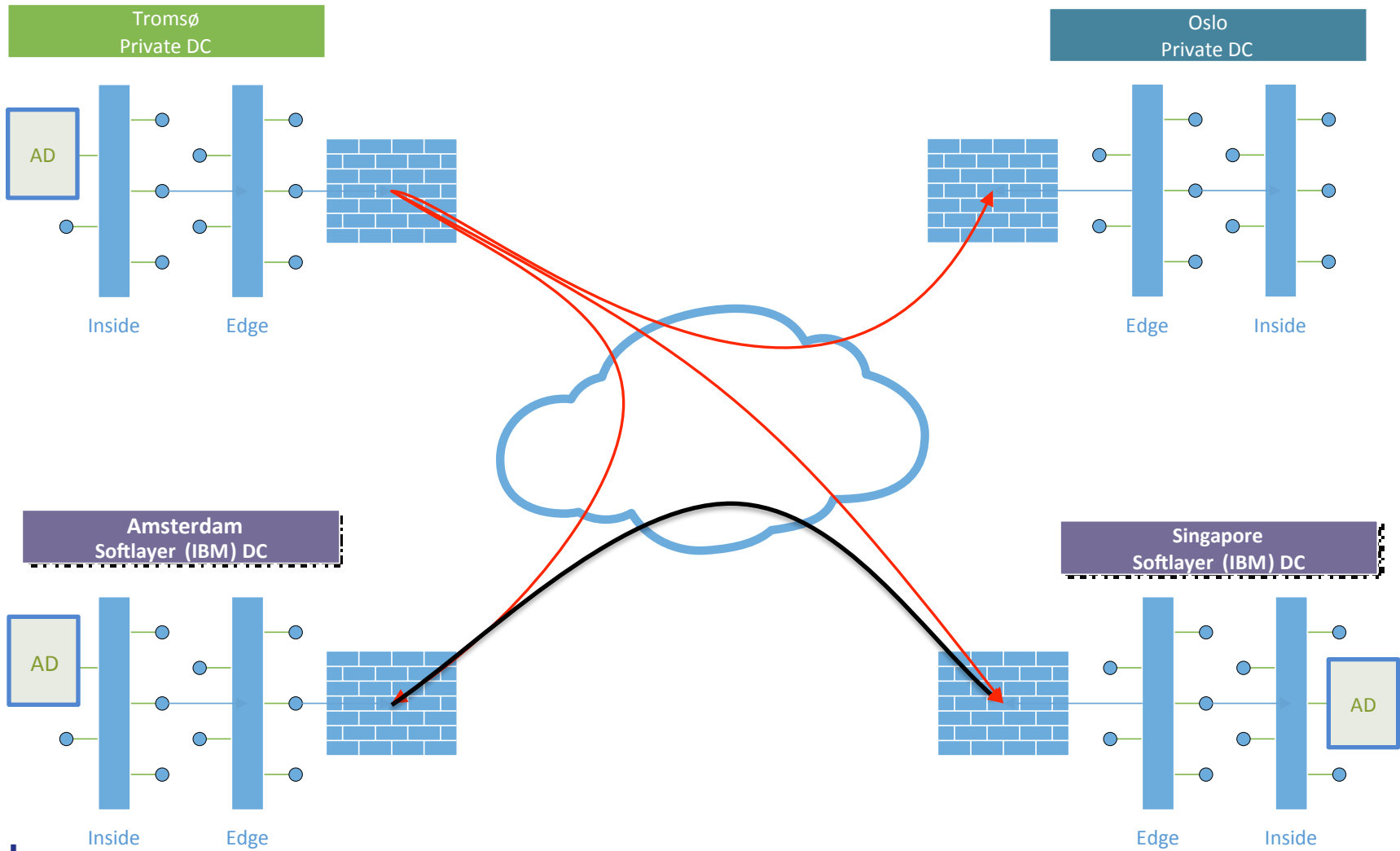
## Hybrid Cloud – What it is

### Hybrid Cloud:

Is a service hosting method where you have ***the option***, with hard work and planning, of getting the best of both worlds.

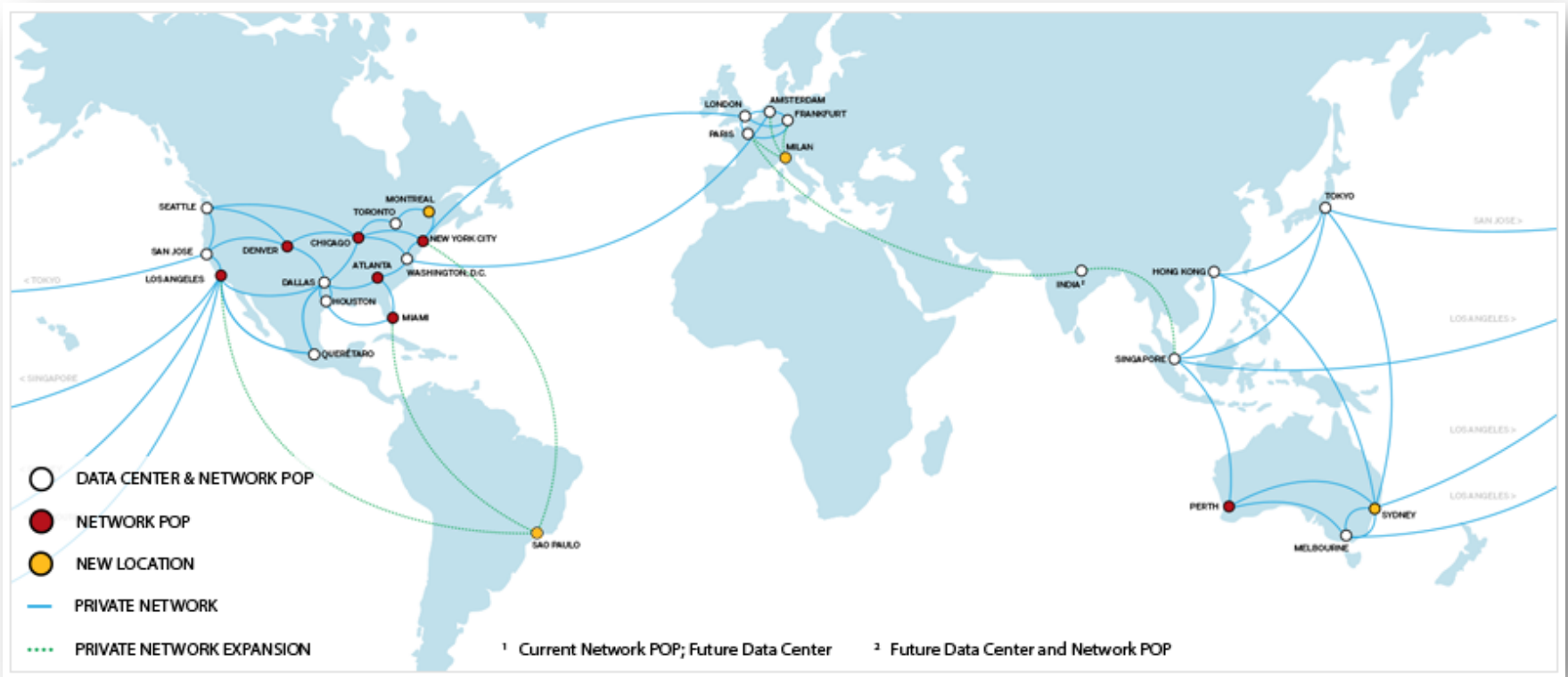
Combine private and public clouds, place services on the infrastructure that best matches the requirements.

# Network Topology



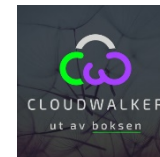


# Softlayer DC Locations



# Implementation

- Requirements defined by Dialog
- Architecture design by Dialog and Cloudwalker
- Implementation in Softlayer by Cloudwalker
- Service migration by Dialog
- Operation by Dialog



# Experience

- **Requirements**
  - Clear requirements is critical
- **Design**
  - Architecture design is complex and took longer than planned
  - Advice: Make the trip and get it done face to face
- **Implementation**
  - Quick and efficient by Cloudwalker
- **Migration of services**
  - Ongoing
- **Operation**
  - Satisfactory

# Summary

- **Hybrid Cloud**
  - Easy maintenance & Scalable operations
  - Reliable service availability for home, branch and mobile users
  - “There is no silver bullet”
- **Cloudwalker**
  - Good access to technical resources and advice
- **Advice**
  - Plan ahead
  - Start small and expand later

# Questions

- **Hybrid Cloud**
  - Easy maintenance & Scalable operations
  - Reliable service availability for home, branch and mobile users
  - “There is no silver bullet”
- **Cloudwalker**
  - Good access to technical resources and advice
- **Advice**
  - Plan ahead
  - Start small and expand later



Dualog AS  
Rasmus Lauridsen  
rasmus@dualog.com



Cloudwalker  
Paul Are Angell Killie  
paul.killie@cloudwalker.no



The Maritime Communications Experts™

SINCE  
1994

Unlock the Potential of  
Internet On Board

**Thank you!**

